

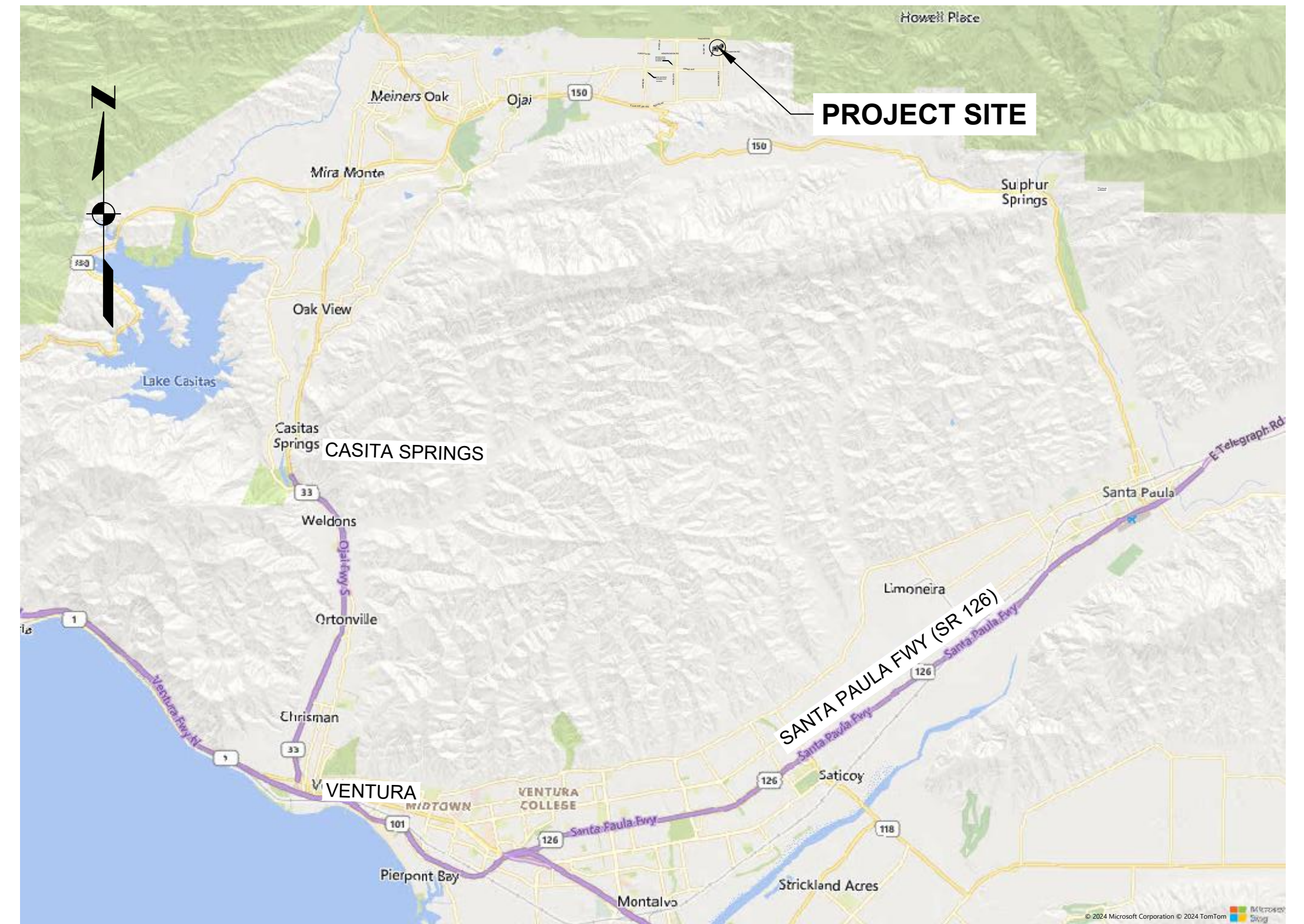
# SENIOR CANYON MUTUAL WATER COMPANY SENIOR CANYON, CA

## FEMA FUNDING FACILITIES REPAIR SERVICE AREA PIPELINE F2 - NIGHTINGALE PIPELINE



**LOCATION MAP**  
SCALE: 1" = 1000'

DRAWING INDEX		
SHEET NO	DWG NO	DRAWING TITLE
<b>GENERAL</b>		
1	G-01	TITLE SHEET, VICINITY MAP AND AND LOCATION MAP
2	G-02	GENERAL NOTES, LEGEND, AND ABBREVIATIONS
<b>CIVIL</b>		
3	C-01	SITE PLAN
4	C-02	PLAN AND PROFILE
5	C-03	CIVIL DETAILS



**VICINITY MAP**  
SCALE: NTS



100% SUBMITTAL					<b>SCALES</b>  IF THIS BAR IS NOT DIMENSION SHOWN, ADJUST SCALES ACCORDINGLY.		DESIGNED JS	SENIOR CANYON MUTUAL WATER COMPANY OJAI, CA  <b>FEMA FUNDING FACILITIES REPAIR          SERVICE AREA PIPELINE F2 - NIGHTINGALE PIPELINE</b>	<b>COVER, LOCATION &amp; VICINITY MAPS,          AND DRAWING INDEX</b>	SCALE NTS
	PRELIMINARY DESIGN PHASE NOT FOR CONSTRUCTION  <small>THIS DOCUMENT IS AN INTERIM DOCUMENT AND NOT SUITABLE FOR CONSTRUCTION. AS AN INTERIM DOCUMENT, IT MAY CONTAIN DATA THAT IS POTENTIALLY INACCURATE OR INCOMPLETE AND IS NOT TO BE RELIED UPON WITHOUT THE EXPRESS WRITTEN CONSENT OF THE PREPARER.</small>	NO	REVISION	DATE			BY			DRAWN HCS  CHECKED WCY

Plot Date: 1/31/2025 8:23 AM  
User: CALVIN SUGG  
p:\k\ce-pw\Documents\Clients\Senior Canyon Mutual Water Company\Projects\FEMA Funding Facilities Repair\_2344220.00\10-Design\10.06-Drawings\General\2344220.00-G-02

**GENERAL NOTES**

GENERAL

- A PORTION OF THIS PROJECT IS WITHIN COUNTY OF VENTURA RIGHT OF WAY. CONTRACTOR SHALL PAY FOR AND OBTAIN AN ENCROACHMENT PERMIT FOR THIS WORK FROM THE COUNTY AND CONFORM TO COUNTY OF VENTURA ENCROACHMENT PERMIT REQUIREMENTS IN THIS AREA.
- ALL WORK SHALL BE PERFORMED IN ACCORDANCE WITH COUNTY OF VENTURA STANDARDS AND APPLICABLE AWWA STANDARDS.
- A PRE-EXISTING SITE CONDITION VIDEO SHALL BE PROVIDED BY THE CONTRACTOR AND SHALL SHOW EXISTING CONDITIONS OF ALL CONCRETE, ASPHALT, LANDSCAPED AREAS, BUILDING EXTERIOR, ETC. SURROUNDING THE CONSTRUCTION AREAS. VIDEO SHALL BE SUBMITTED TO THE OWNER PRIOR TO BREAKING GROUND. THE CONTRACTOR SHALL TAKE ALL PRECAUTIONARY MEASURES NECESSARY TO PROTECT EXISTING IMPROVEMENTS WHICH ARE TO REMAIN IN PLACE FROM DAMAGE. ALL IMPROVEMENTS DAMAGED BY THE CONTRACTOR'S OPERATIONS SHALL BE EXPEDITIOUSLY REPAIRED OR RECONSTRUCTED AT THE CONTRACTOR'S EXPENSE WITHOUT ADDITIONAL COMPENSATION.
- CONTRACTOR SHALL RESTORE ALL SURVEY MONUMENTS THAT ARE DAMAGED OR DESTROYED DURING CONSTRUCTION.
- OBSERVATIONS OF WORK IN PROGRESS DURING SITE VISITS SHALL NOT ALTER THE REQUIREMENTS OF THE CONTRACT DOCUMENTS.

UTILITIES

- LOCATIONS OF UNDERGROUND UTILITIES SHOWN ON THE DRAWINGS WERE OBTAINED FROM AVAILABLE RECORDS AND ARE SHOWN IN THEIR APPROXIMATE LOCATION. THERE IS NO GUARANTEE THAT ALL EXISTING PIPELINES AND OBSTRUCTIONS ARE SHOWN OR THAT LOCATIONS INDICATED ARE ACCURATE. PRIOR TO THE START OF CONSTRUCTION, THE CONTRACTOR SHALL POHOLE TO DETERMINE ACTUAL LOCATION AND ELEVATION OF ALL EXISTING UTILITIES IN AND AROUND THE AREAS OF NEW CONSTRUCTION.
- THE CONTRACTOR SHALL TAKE ALL PRECAUTIONARY MEASURES NECESSARY TO PROTECT ALL REMAINING EXISTING UTILITIES WHETHER SHOWN OR NOT SHOWN.
- PRIOR TO ANY CONNECTION TO AN EXISTING UTILITY, THE CONTRACTOR SHALL COORDINATE WITH THE UTILITY OWNER.
- PRIOR TO ANY EXCAVATION IN THE VICINITY OF ANY EXISTING UNDERGROUND FACILITIES, INCLUDING ALL WATER, SEWER, STORM DRAIN, GAS, PETROLEUM PRODUCTS, OR OTHER PIPELINES; ALL BURIED ELECTRIC POWER, COMMUNICATIONS, OR TELEVISION CABLES; ALL TRAFFIC SIGNAL AND STREET LIGHTING FACILITIES; AND ALL ROADWAY, STATE HIGHWAY, AND RAILROAD RIGHTS-OF-WAY, THE CONTRACTOR SHALL NOTIFY THE RESPECTIVE AUTHORITIES REPRESENTING THE OWNERS OR AGENCIES RESPONSIBLE FOR SUCH FACILITIES TO FACILITATE A TIMELY MANNER OF WORK SO THAT A REPRESENTATIVE OF SAID OWNERS OR AGENCIES CAN BE PRESENT DURING SUCH WORK IF THEY SO DESIRE. IN THE CASE OF THE UNDERGROUND UTILITY SERVICE ALERT CENTER, THIS NOTICE WILL GIVE THEM TIME TO MARK THE LOCATION OF THE UTILITIES. THE CONTRACTOR SHALL ALSO NOTIFY UNDERGROUND SERVICES ALERT (USA) AT (811) IN ACCORDANCE WITH THE SPECIFICATIONS TO FACILITATE A TIMELY MANNER OF WORK, PRIOR TO SUCH EXCAVATION.

**CIVIL NOTES**

GENERAL

- CONTRACTOR SHALL OBTAIN PERMITS NECESSARY TO COMPLETE FEATURES WITHIN EASEMENTS, DEDICATIONS AND PUBLIC RIGHT-OF-WAY.
- COORDINATES ARE PROVIDED AS FOLLOWS UNLESS OTHERWISE NOTED ON DRAWINGS:  
2.1. FACE OF WALL  
2.2. FACE OF CURB  
2.3. CORNER OF EQUIPMENT PADS AND VAULTS
- ORIENT SURFACE FEATURES PARALLEL TO CURB/GUTTER OR WALLS UNLESS OTHERWISE NOTED.
- PROTECT ALL SURVEY MONUMENTS.
- SHOULD THE CONTRACTOR DISCOVER ANY DISCREPANCIES BETWEEN THE CONDITIONS EXISTING IN THE FIELD AND THE INFORMATION SHOWN ON THESE DRAWINGS, CONTRACTOR SHALL NOTIFY THE OWNER PRIOR TO PROCEEDING WITH CONSTRUCTION.
- THE CONTRACTOR SHALL MAINTAIN A COPY OF AN APPROVED SET OF PLANS ON THE CONSTRUCTION SITE AT ALL TIMES.
- "LIMITS OF EXCAVATION" INDICATES THE MINIMUM MATERIAL REMOVAL REQUIRED DUE TO GEOTECHNICAL RECOMMENDATIONS AND THE NATURE OF THE WORK. TAKE CARE NOT TO EXCAVATE BEYOND THE LIMITS INDICATED IN THE CONTRACT DOCUMENTS.
- "LIMITS OF GRADING" INDICATES THE MINIMUM DISTURBANCE AREA DUE TO FINISH GRADES. LIMITS OF GRADING MAY NOT BE INCLUSIVE OF ALL PIPING, CONDUITS, OR DUCT BANKS. LIMITS OF GRADING MAY ALSO BE CALLED DAYLIGHT OR CONFORM LINE, WHICH ARE INTENDED TO BE INTERCHANGEABLE.
- "LIMITS OF WORK" INDICATES THE TOTAL AREA OF DISTURBANCE DUE TO THE NATURE AND SCOPE OF THE WORK. THE TERM MAY ALSO BE USED TO INDICATE AREAS WHERE ACCESS IS LIMITED OR RESTRICTED.
- PROVIDE TEMPORARY TRAFFIC SIGNAGE IN ACCORDANCE WITH STATE AND LOCAL AGENCIES DURING THE COURSE OF CONSTRUCTION.
- THE CONTRACTOR SHALL BE RESPONSIBLE FOR ALL TRAFFIC CONTROL WITHIN THE PUBLIC RIGHT OF WAY IN ACCORDANCE WITH LOCAL ORDINANCES. NO WORK SHALL COMMENCE UNTIL ALL REQUIRED TRAFFIC CONTROL MEASURES ARE IN PLACE.

**CIVIL NOTES - CONT'D**

GRADING

- ADJUST VALVE BOXES, PULL BOXES, VAULTS, AND MAHOLES TO FINISHED GRADES AND SLOPES SHOWN ON CIVIL GRADING DRAWINGS UNLESS OTHERWISE SHOWN OR SPECIFIED. MANHOLES IN OPEN FIELDS SHALL BE SET ONE FOOT ABOVE GRADE. APPROXIMATE RIM ELEVATIONS ARE SHOWN ON DRAWINGS.
- GRADES SHOWN ARE TO TOP OF THE FINISHED SURFACE UNLESS OTHERWISE NOTED.

DEMOLITION

- DEMOLITION EXTENTS INDICATED IN DRAWINGS ARE THE MINIMUM REQUIRED TO COMPLETE THE WORK. EXTENTS OF DEMOLITION REFLECTED IN THE CONTRACTOR'S BID SHALL INCORPORATE DEMOLITION MEANS AND METHODS.
- PROVIDE COORDINATES OF ABANDONED UTILITIES IN THE RECORD DRAWINGS.

PIPING

- THESE NOTES ARE GENERIC IN NATURE. PROJECT SPECIFIC NOTES ON FOLLOWING DRAWINGS TAKE PRECEDENCE.
- THE CONTRACTOR SHALL COMPLY WITH THE STATE DEPARTMENT OF HEALTH SERVICES CRITERIA FOR THE SEPARATION BETWEEN WATER MAINS, NON-POTABLE WATER UTILITIES, AND SEWER.
- INSTALL WATER, STORM, AND SEWER PIPELINES WITH A MINIMUM OF 24 INCHES OF COVER, UNLESS OTHERWISE NOTED.
- PRIOR TO SUBMITTAL OF PIPE SHOP DRAWINGS, VERIFY THE INVERT ELEVATIONS, ALIGNMENT, OUTSIDE DIAMETER, LOCATION, AND MATERIAL OF ALL EXISTING PIPELINES TO WHICH NEW PIPELINES WILL BE CONNECTED.
- PIPE STATIONING REPRESENTS THE HORIZONTAL PROJECTION OF THE PIPE CENTERLINE BETWEEN MANHOLES, POINTS OF INFLECTION, AND/OR CENTER OF FITTINGS.
- RESTRAIN ALL PIPE, FITTINGS, FLEXIBLE CONNECTORS, AND/OR FLANGED COUPLING ADAPTERS UNLESS OTHERWISE NOTED. THRUST PROTECTION SHALL BE ADEQUATE FOR TEST PRESSURES SPECIFIED.
- LOCATION OF EXISTING UTILITIES ARE APPROXIMATE. CONTRACTOR SHALL EXPOSE EXISTING PIPE(S) OR STRUCTURE(S) TO WHICH NEW PIPE(S) IS/ARE CONNECTING. VERIFY EXACT LOCATION, SIZE, MATERIALS, AND INVERT ELEVATIONS PRIOR TO SUBMITTING PIPE DRAWINGS.
- PROTECT EXISTING UTILITIES UNLESS OTHERWISE NOTED.
- USE CAUTION WHEN WORKING IN PROXIMITY TO GAS. NOTIFY UTILITY COMPANY WHEN WORKING WITHIN THE VICINITY, AND FOLLOW UTILITY SAFETY GUIDELINES AND OSHA REQUIREMENTS. HAND DIG ALL CONSTRUCTION WITHIN 5 FEET HORIZONTALLY OF ANY GAS MAIN.
- USE CAUTION WHEN WORKING IN PROXIMITY TO OVERHEAD ELECTRICAL LINES. FOLLOW ELECTRICAL UTILITY SAFETY GUIDELINES AND OSHA REQUIREMENTS.
- CROSSING PIPELINES SHOWN IN PROFILE REPRESENT OUTSIDE DIAMETER UNLESS OTHERWISE NOTED.
- ORIENT ECCENTRIC MANHOLE(S) SUCH THAT THE LID IS OUTSIDE OF WHEEL PATH.
- COORDINATES LOCATING MANHOLES ARE TO THE CENTER OF THE STRUCTURE.
- SIZE OF FITTING SHOWN ON THE DRAWINGS CORRESPONDS TO THE ADJACENT STRAIGHT RUN OF PIPE, UNLESS OTHERWISE NOTED. MATCH TYPE OF JOINT AND FITTING MATERIAL TO ADJACENT STRAIGHT RUN OF PIPE, UNLESS OTHERWISE NOTED.
- PIPE HANGER AND SUPPORT LOCATIONS SHOWN ARE APPROXIMATE. FINAL PIPE SUPPORT LOCATIONS SHALL BE SUBMITTED BY THE CONTRACTOR AND APPROVED BY THE ENGINEER PRIOR TO INSTALLATION.
- NUMBER AND LOCATION OF UNIONS SHOWN ON DRAWINGS ARE APPROXIMATE. PROVIDE UNIONS NECESSARY TO FACILITATE CONVENIENT REMOVAL OF VALVES AND MECHANICAL EQUIPMENT.
- COORDINATE AND PERFORM CONNECTIONS TO THE WORK OF OTHER CONTRACTORS, IF APPLICABLE.

**SURVEY NOTES**

BASIS OF COORDINATES

CALIFORNIA STATE PLANE, NAD83  
HORIZONTAL DATUM: NAD83, ZONE 5, US SURVEY FEET

VERTICAL DATUM:  
NAVD88

BENCHMARK

3.5" BRASS CAP  
IN VCSM PER 58RS32  
ACCEPTED AS INTERSECTION  
OF THACHER ROAD & MCANDREW ROAD

3.5" BRASS CAP  
IN VCSM PER 58RS32

SURVEYOR

HENRY LAND SURVEYING INC.  
619 CRESTVIEW DRIVE, OJAI, CA. 93023

**ABBREVIATIONS**

@	AT
CL	CENTER LINE
PL	PROPERTY LINE
ADDIT	ADDITIONAL
APPROX	APPROXIMATE
AR	AIR RELEASE
AV	AIR VACUUM
AV/AR	AIR VACUUM/AIR RELEASE
AWWA	AMERICAN WATER WORKS ASSOCIATION
BFV	BUTTERFLY VALVE
BLDG	BUILDING
BOTM	BOTTOM
DEFL	DEFLECTION
DIA	DIAMETER
DIP	DUCTILE IRON PIPE
E	EASTING
EA	EACH
ELEV	ELEVATION
ELL	ELBOW
EQUIP	EQUIPMENT
ESMT	EASEMENT
EXIST	EXISTING
FG	FINISHED GRADE
FLG	FLANGE(-D)
GALV	GALVANIZED
HORZ	HORIZONTAL
IE	INLET ELEVATION
MAX	MAXIMUM
MIN	MINIMUM
MJ	MECHANICAL JOINT
N	NORTHING
NTS	NOT TO SCALE
OC	ON CENTER
OD	OUTSIDE DIAMETER
PI	POINT OF INTERSECTION, PRESSURE INDICATOR (GAUGE)
PSI	POUNDS PER SQUARE INCH
PVC	POLYVINYL CHLORIDE, POINT OF VERTICAL CURVE
SCH	SCHEDULE
SS	STAINLESS STEEL
STD	STANDARD
T&B	TOP AND BOTTOM
TYP	TYPICAL
UTIL	UTILITY
VCSM	VENTURA COUNTY SURVEY MONUMENT
VERT	VERTICAL

**CONTROL SYMBOLS**

	BM-XX	BENCH MARK
		CONTROL POINT

**CALLOUTS AND SHORTHAND SYMBOLS**

	DIRECTION OF FLOW
	SHEET KEYNOTE
	CENTERLINE
	PLATE
	DIAMETER
	APPROXIMATELY
	ANGLE

**REVISION SYMBOLS**

	CLOUDED AREA INDICATES CHANGED INFORMATION; NUMBER IN TRIANGLE INDICATES THE DRAWING VERSION AND MATCHES WITH REVISION INFORMATION IN THE REVISION BLOCK WITHIN THE DRAWING BORDER
--	--

**SYMBOLGY**

	NEW
	EXISTING; SCREENED TEXT LABELS FOR SCREENED ELEMENTS IMPLY THE ELEMENT IS EXISTING
	WATER LINE
	CENTERLINE
	RIGHT OF WAY
	BREAK LINE
	NATIVE EARTH (IN SECTION)
	ENGINEERED FILL (IN SECTION)
	SAND OR GROUT (IN PLAN AND SECTION)
	GRAVEL (IN PLAN AND SECTION)
	AGGREGATE BASE (IN PLAN AND SECTION)
	CONCRETE (IN PLAN AND SECTION)
	VEGETATION

**CROSS-REFERENCING SYMBOLS**

	FOUND ON DRAWING WHERE DETAIL, SECTION, OR ELEVATION IS CALLED OUT
	FOUND ON DRAWING WHERE DETAIL, SECTION, OR ELEVATION IS DRAWN
	DETAIL TITLE SCALE: ##" = 1'-0"
	SECTION TITLE SCALE: ##" = 1'-0"
	STANDARD DETAIL TITLE SUB-TITLE SCALE: ##" = 1'-0" REV 00

**100% SUBMITTAL**

PRELIMINARY DESIGN PHASE  
NOT FOR CONSTRUCTION

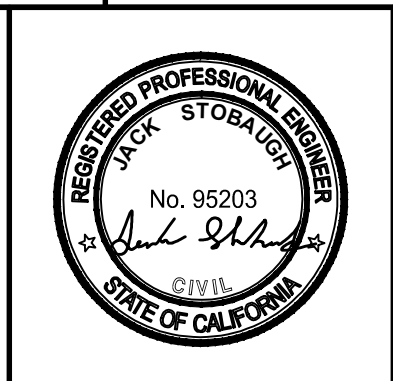
THIS DOCUMENT IS AN INTERIM DOCUMENT AND NOT SUITABLE FOR CONSTRUCTION. AS AN INTERIM DOCUMENT, IT MAY CONTAIN DATA THAT IS POTENTIALLY INACCURATE OR INCOMPLETE AND IS NOT TO BE RELIED UPON WITHOUT THE EXPRESS WRITTEN CONSENT OF THE PREPARER.

NO	REVISION	DATE	BY

**SCALES**

0 1" = 1"  
0 25mm = 1"

IF THIS BAR IS NOT DIMENSION SHOWN, ADJUST SCALES ACCORDINGLY.



DESIGNED JS  
DRAWN HCS  
CHECKED WCY

SENIOR CANYON MUTUAL WATER COMPANY  
OJAI, CA

FEMA FUNDING FACILITIES REPAIR  
SERVICE AREA PIPELINE F2 - NIGHTINGALE PIPELINE

Kennedy Jenks

**GENERAL NOTES, LEGEND, AND ABBREVIATIONS**

SCALE NTS  
JOB NO 2344220.00  
DATE JANUARY 2025  
SHEET 2 OF 5  
G-02

Plot Date: 1/31/2025 9:06 AM

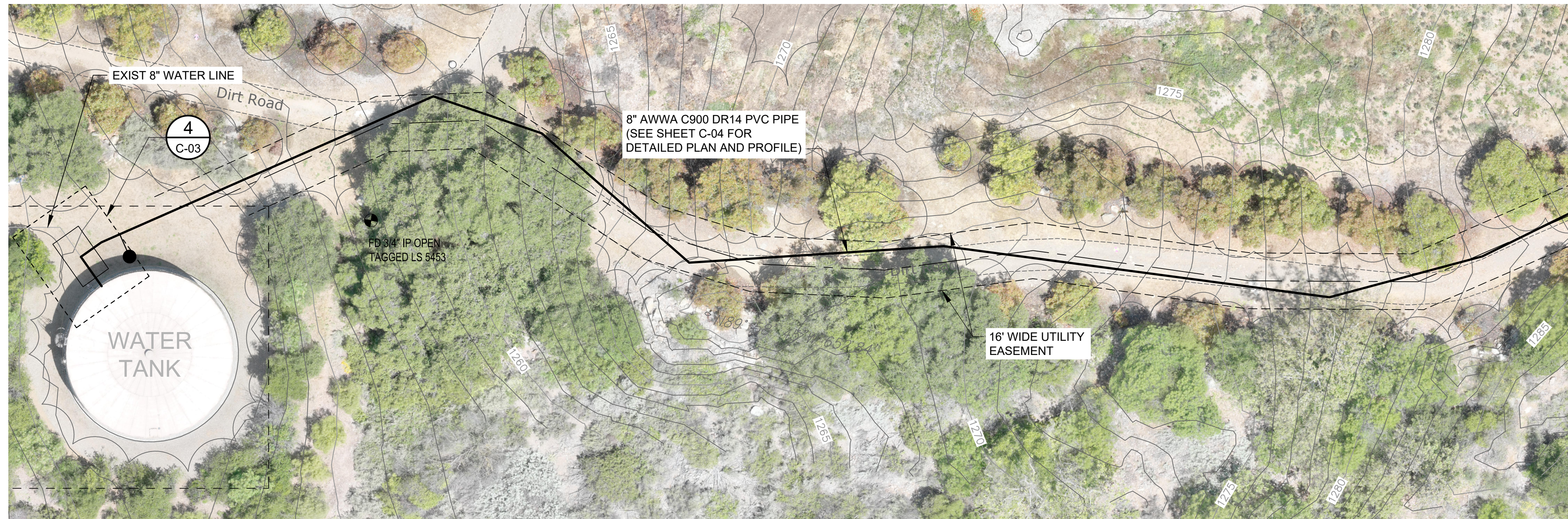
User: CALVIN SUGG

01

3

4

p:\kce-pw-bentley.com\kce-pw\Documents\Clients\Senior Canyon Mutual Water Company\Projects\FEMA Funding Facilities Repair\_2344220.00\10-Design\10.06-Drawings\Civil\2344220.00-C-01



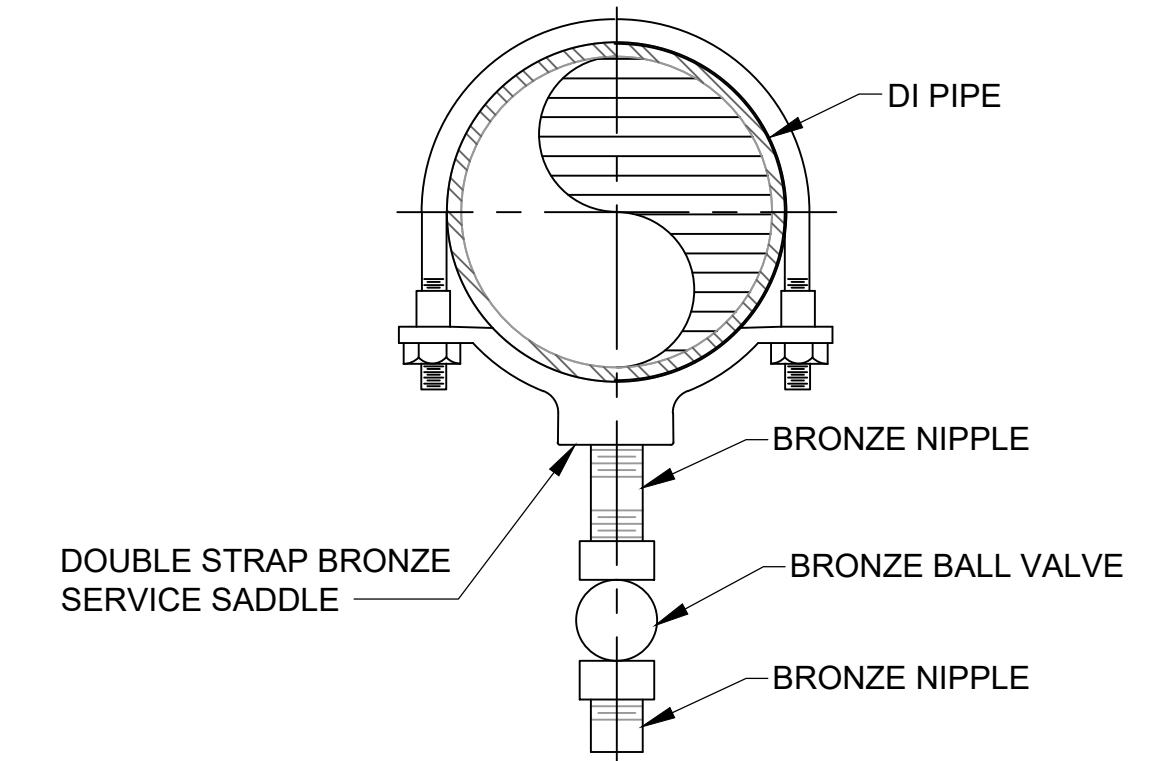
PLAN  
SCALE: 1" = 20'



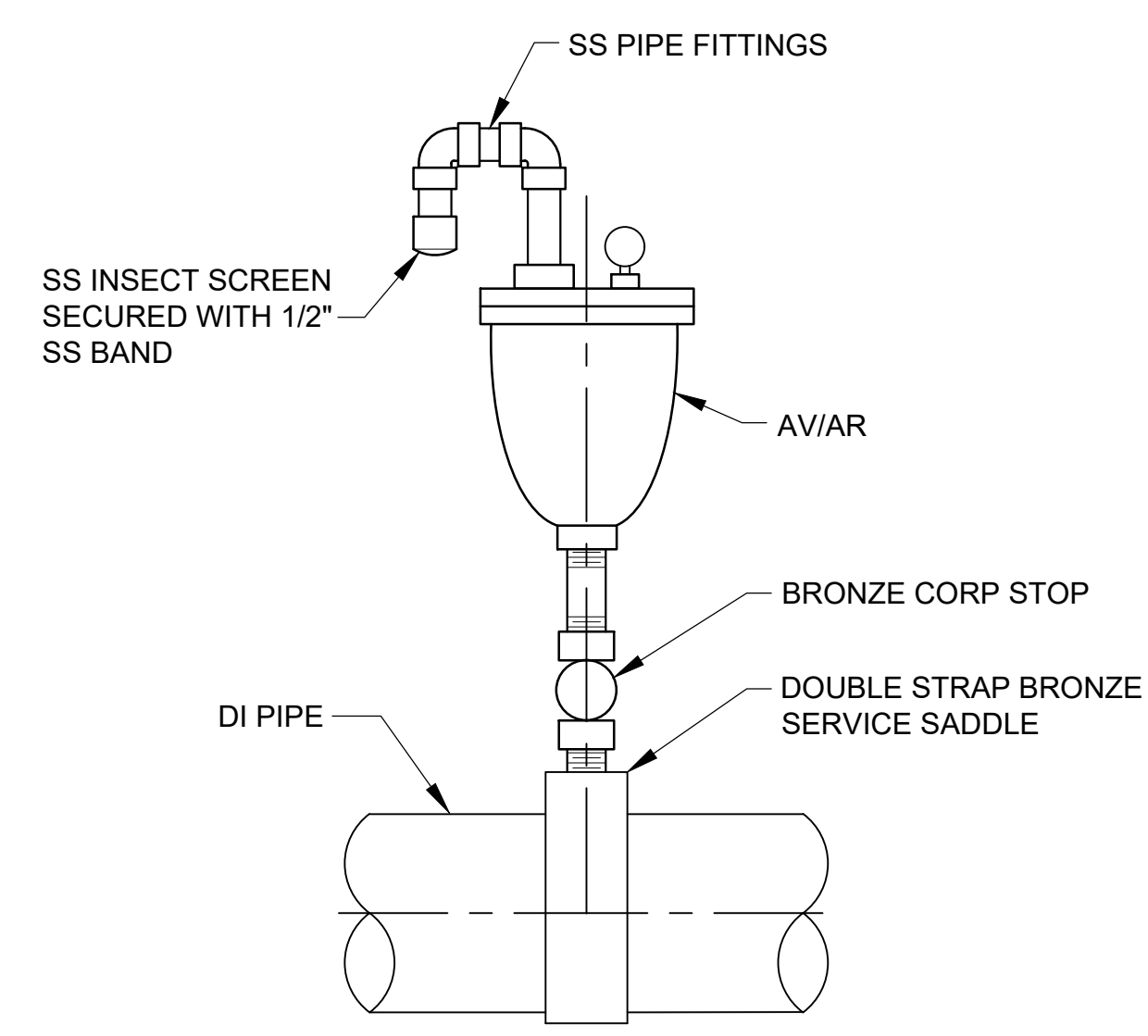
PLAN  
SCALE: 1" = 20'

SHEET KEYNOTES

A. CONTRACTOR TO EXPOSE THE 6-INCH PIPE TO THE INVERT AND CONDUCT A PIPE CONDITION ASSESSMENT OF THE PIPE, UP TO THE BRIDGE CROSSING, IN CONJUNCTION WITH SENIOR CANYON STAFF AND THE ENGINEER. BASED ON THE CONDITION OF THE EXISTING PIPE, CONTRACTOR TO REPLACE THIS PORTION OF THE BURIED PIPE AS NEEDED (FROM TIE-IN SOUTH TO PIPE DAYLIGHT AT THE BRIDGE CROSSING AND POTENTIALLY FROM THE TIE-IN NORTH FOR A DISTANCE TO BE DETERMINED). COST FOR REPLACEMENT, IF ANY, WILL BE NEGOTIATED WITH SENIOR CANYON PRIOR TO PERFORMING ANY WORK.



1 1" DRAIN DETAIL  
C-02 SCALE: NTS



2 AVIAR DETAIL  
C-02 SCALE: NTS

100% SUBMITTAL

PRELIMINARY DESIGN PHASE  
NOT FOR CONSTRUCTION

THIS DOCUMENT IS AN INTERIM DOCUMENT AND NOT SUITABLE FOR CONSTRUCTION. AS AN INTERIM DOCUMENT, IT MAY CONTAIN DATA THAT IS POTENTIALLY INACCURATE OR INCOMPLETE AND IS NOT TO BE RELIED UPON WITHOUT THE EXPRESS WRITTEN CONSENT OF THE PREPARER.

NO	REVISION	DATE	BY

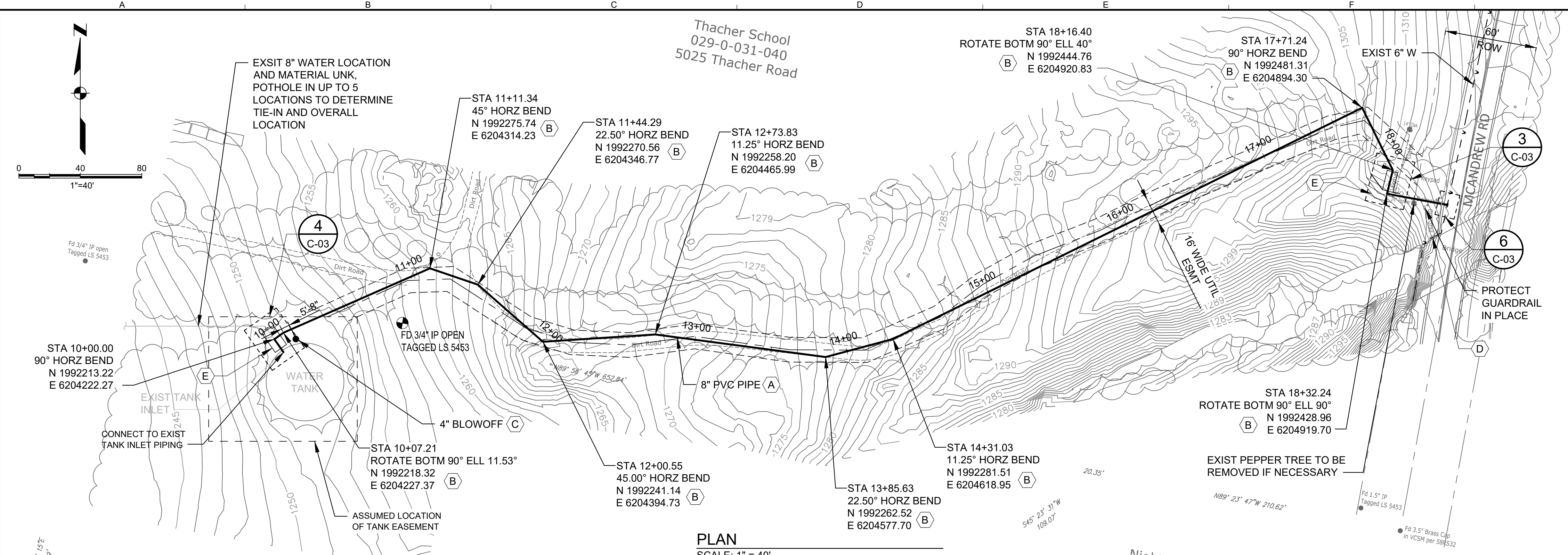
SCALES  
 0" = 1"  
 0" = 25mm  
 IF THIS BAR IS NOT DIMENSION SHOWN, ADJUST SCALES ACCORDINGLY.



DESIGNED JS  
 DRAWN HCS  
 CHECKED WCY

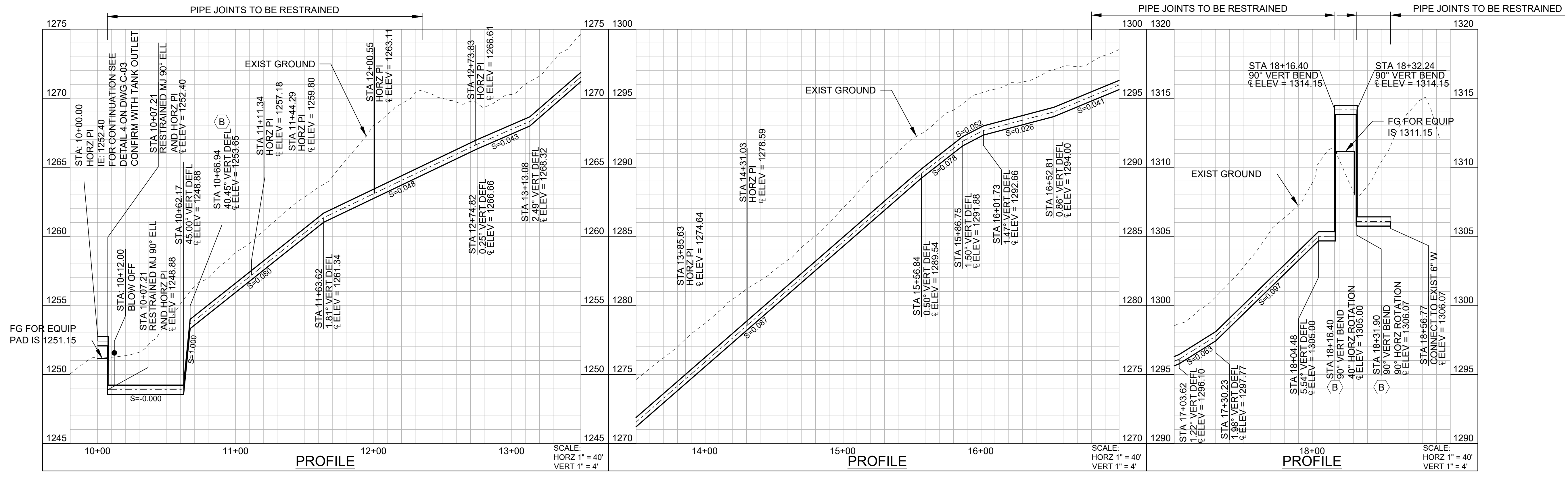
SENIOR CANYON MUTUAL WATER COMPANY  
 OJAI, CA  
 FEMA FUNDING FACILITIES REPAIR  
 SERVICE AREA PIPELINE F2 - NIGHTINGALE PIPELINE  
 Kennedy Jenks

SITE PLAN  
 SCALE 1" = 20'  
 JOB NO 2344220.00  
 DATE JANUARY 2025  
 SHEET 3 OF 5  
 C-01



PLAN  
SCALE: 1" = 40'

- SHEET KEYNOTES**
- A. INSTALL 8-INCH AWWA C900 DR 14 (PRESSURE CLASS 305) WATERLINE WITH TRACER WIRE AND DETECTION TAPE. TRENCH BACKFILL AND RESTORATION SHALL BE IN ACCORDANCE WITH COUNTY OF VENTURA PUBLIC WORKS AGENCY WATER AND SANITATION CONSTRUCTION STANDARDS DETAIL W-1.
  - B. INSTALL DUCTILE IRON FITTING SPECIFIED ON PLANS. INSTALL THRUST BLOCK PER COUNTY OF VENTURA PUBLIC WORKS AGENCY WATER AND SANITATION CONSTRUCTION STANDARDS DETAIL W-19. WITH THE EXCEPTION THAT DEPTH OF COVER TO TOP OF PIPE CAN BE A MINIMUM OF 24".
  - C. INSTALL 4" BLOWOFF PER COUNTY OF VENTURA PUBLIC WORKS AGENCY WATER AND SANITATION CONSTRUCTION STANDARDS DETAIL W-10.
  - D. CONTRACTOR TO EXPOSE THE 6-INCH PIPE TO THE INVERT AND CONDUCT A PIPE CONDITION ASSESSMENT OF THE PIPE. UP TO THE BRIDGE CROSSING, IN CONJUNCTION WITH SENIOR CANYON STAFF AND THE ENGINEER. BASED ON THE CONDITION OF THE EXISTING PIPE, CONTRACTOR TO REPLACE THIS PORTION OF THE BURIED PIPE AS NEEDED (FROM TIE-IN TO SOUTH PIPE DAYLIGHT AT THE BRIDGE CROSSING AND POTENTIALLY FROM THE TIE-IN NORTH FOR A DISTANCE TO BE DETERMINED). COST FOR REPLACEMENT, IF ANY, WILL BE NEGOTIATED WITH SENIOR CANYON PRIOR TO PERFORMING ANY WORK.
  - E. FINAL LOCATION OF PAD TO BE DETERMINED BY SENIOR CANYON STAFF IN THE FIELD. EXCAVATE MINIMUM 2' BENEATH PAD AND RECOMPACT WITH NATIVE SOIL, AS DEFINED IN SPECIFICATION SECTION 02300. IN 6" LIFTS TO 95% RELATIVE DENSITY. REGRADE THE AREA AS NEEDED WITH COMPACTED FILL TO 95% RELATIVE COMPACITON. MAX SLOPE SHALL BE 2:1.



PROFILE  
SCALE: 1" = 40'

**100% SUBMITTAL**

PRELIMINARY DESIGN PHASE  
NOT FOR CONSTRUCTION

THIS DOCUMENT IS AN INTERIM DOCUMENT AND NOT SUITABLE FOR CONSTRUCTION. AS AN INTERIM DOCUMENT, IT MAY CONTAIN DATA THAT IS POTENTIALLY INACCURATE OR INCOMPLETE AND IS NOT TO BE RELIED UPON WITHOUT THE EXPRESS WRITTEN CONSENT OF THE PREPARER.

NO	REVISION	DATE	BY

**SCALES**

0 1" = 40'

0 25mm

IF THIS BAR IS NOT DIMENSION SHOWN, ADJUST SCALES ACCORDINGLY.



DESIGNED: JS

DRAWN: HCS

CHECKED: WCY

SENIOR CANYON MUTUAL WATER COMPANY  
OJAI, CA

FEMA FUNDING FACILITIES REPAIR  
SERVICE AREA PIPELINE F2 - NIGHTINGALE PIPELINE

**Kennedy Jenks**

**PLAN AND PROFILE**

SCALE: 1" = 40'

JOB NO: 2344220.00

DATE: JANUARY 2025

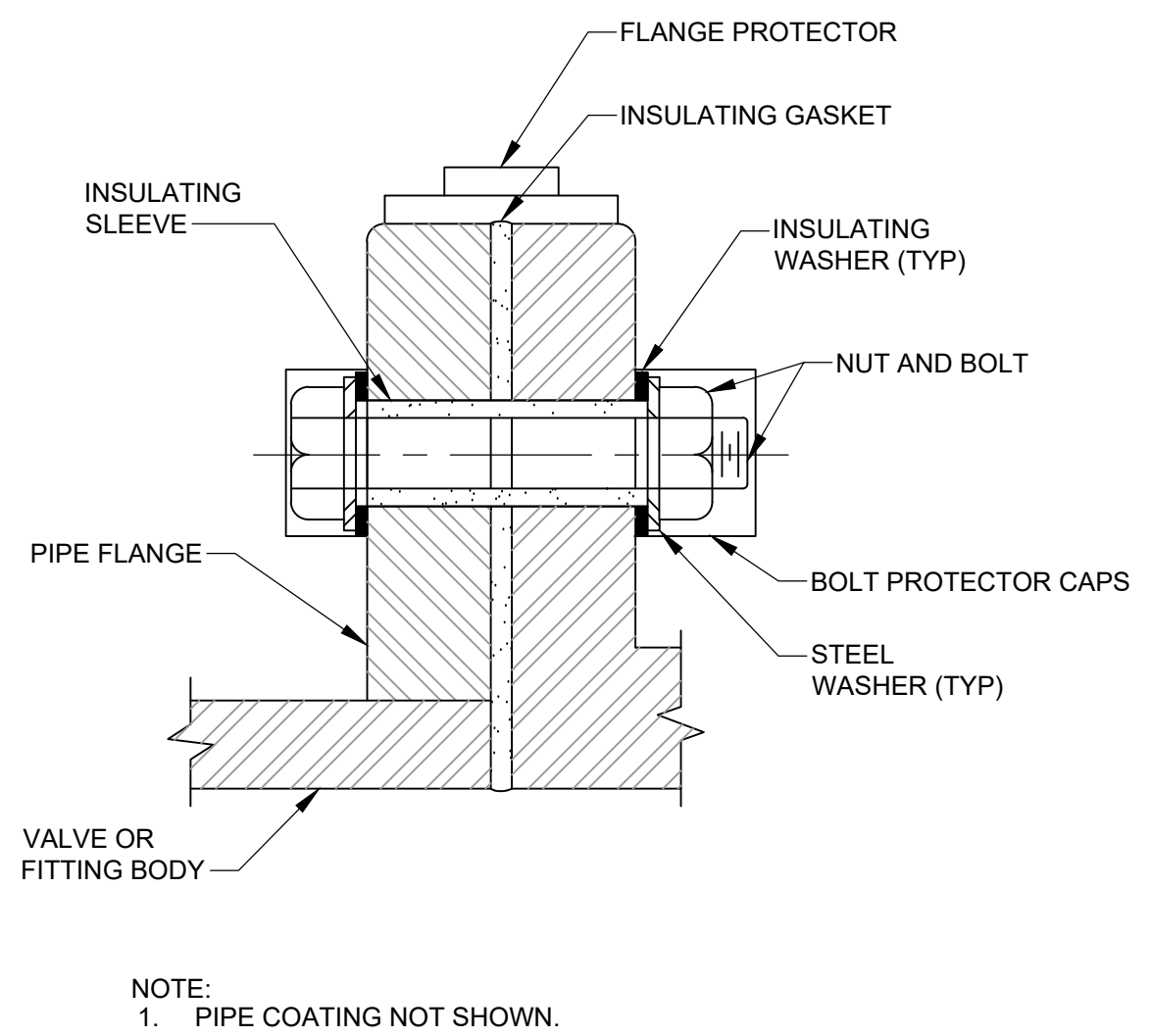
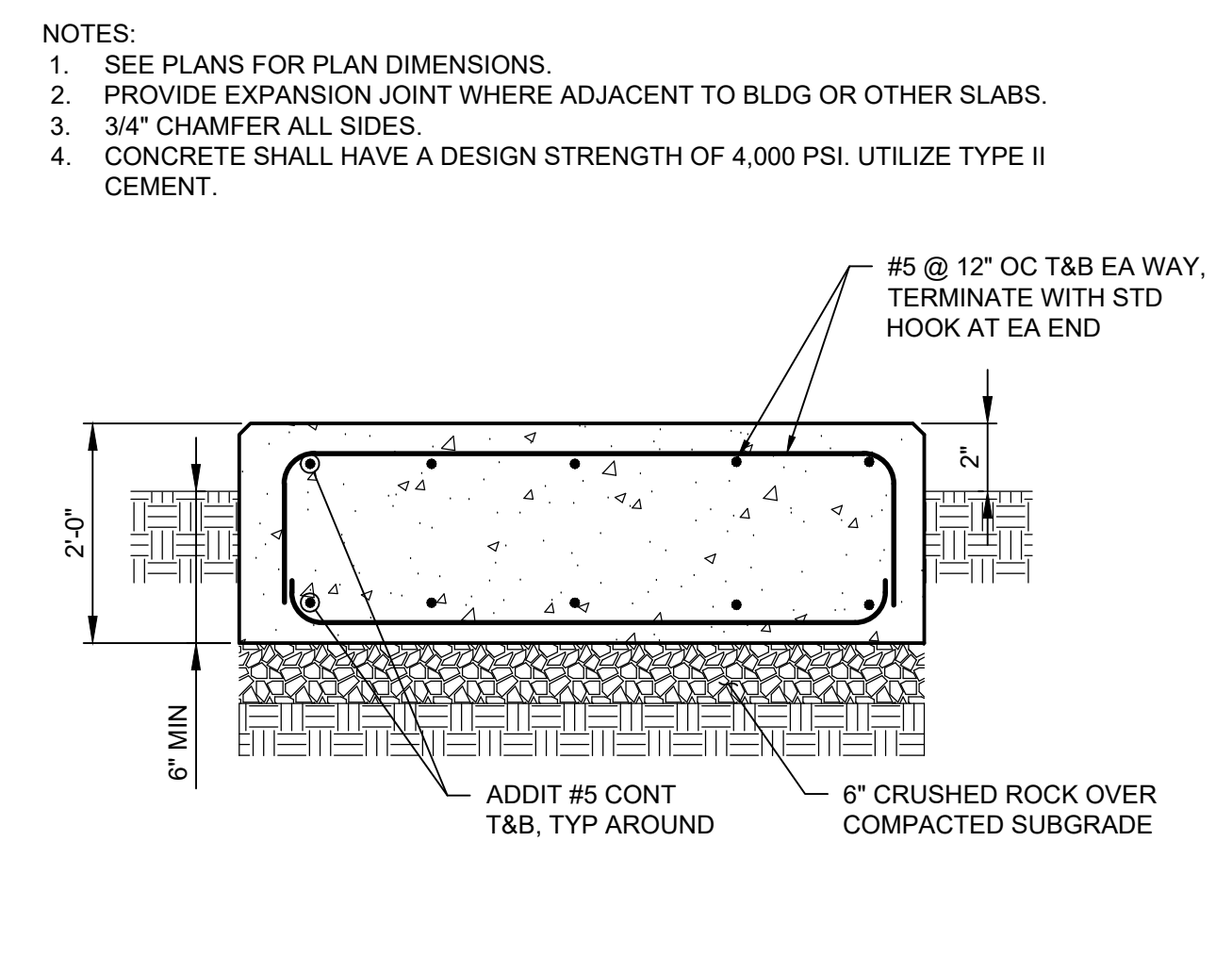
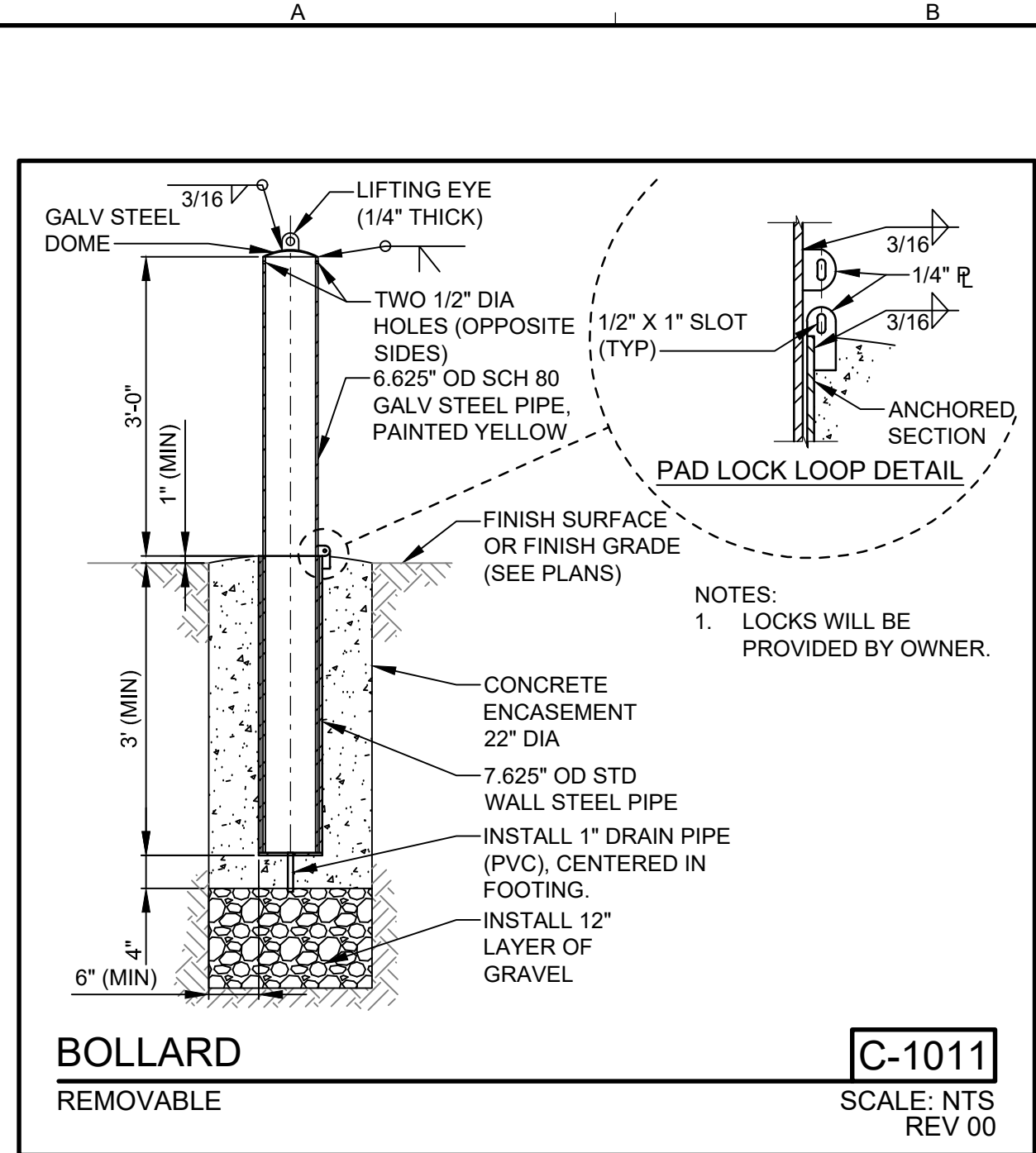
SHEET: 4 OF 5

C-02

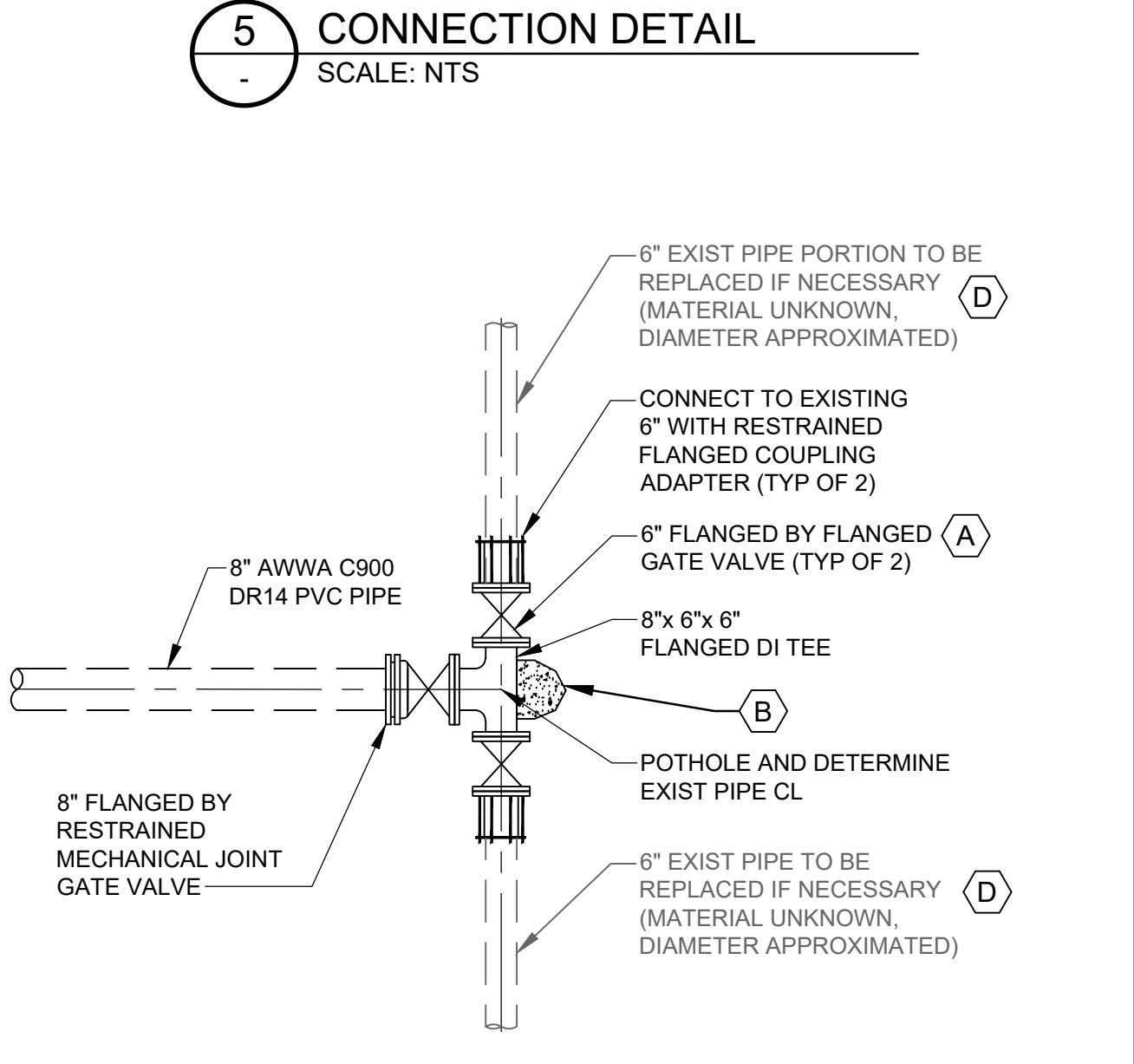
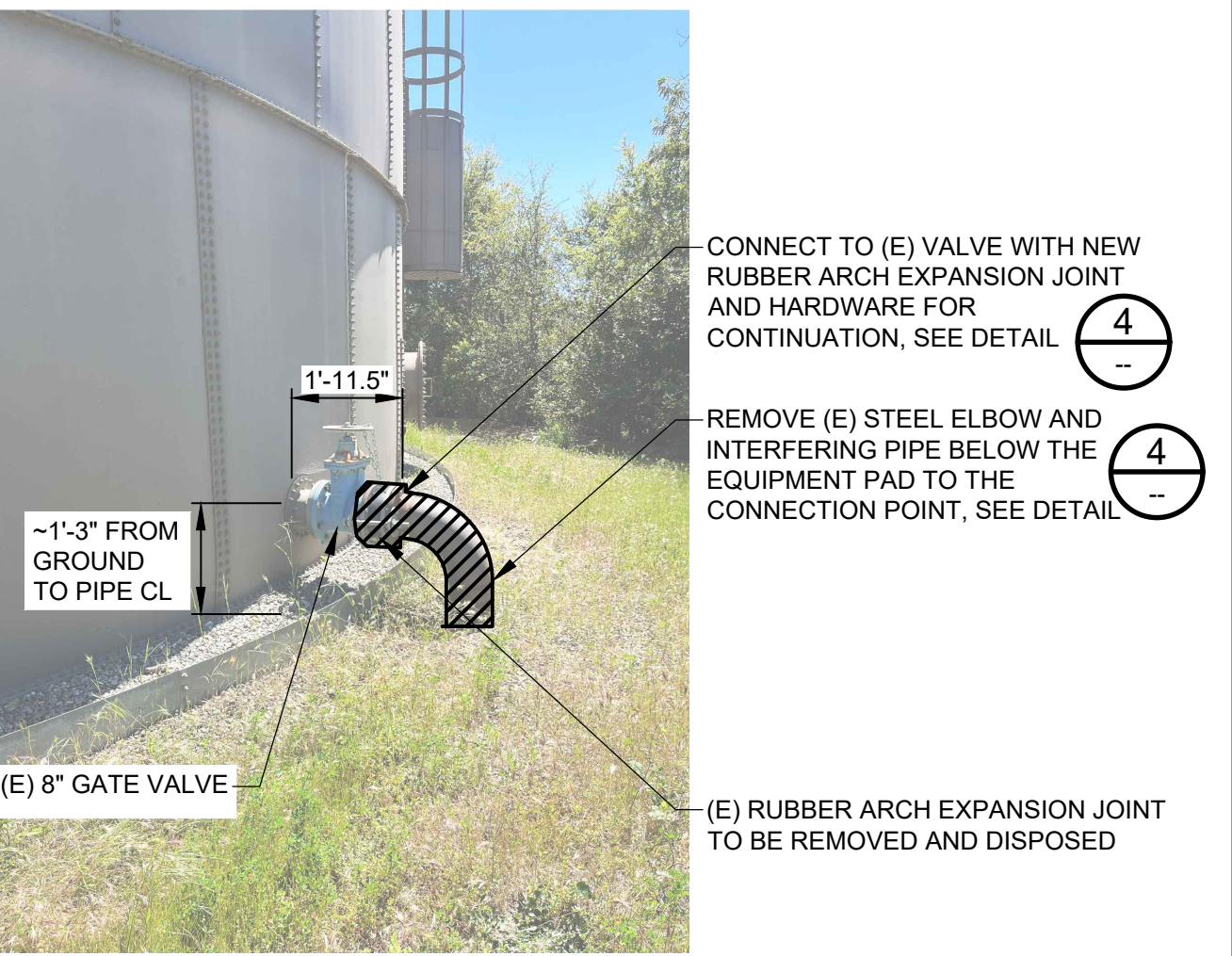
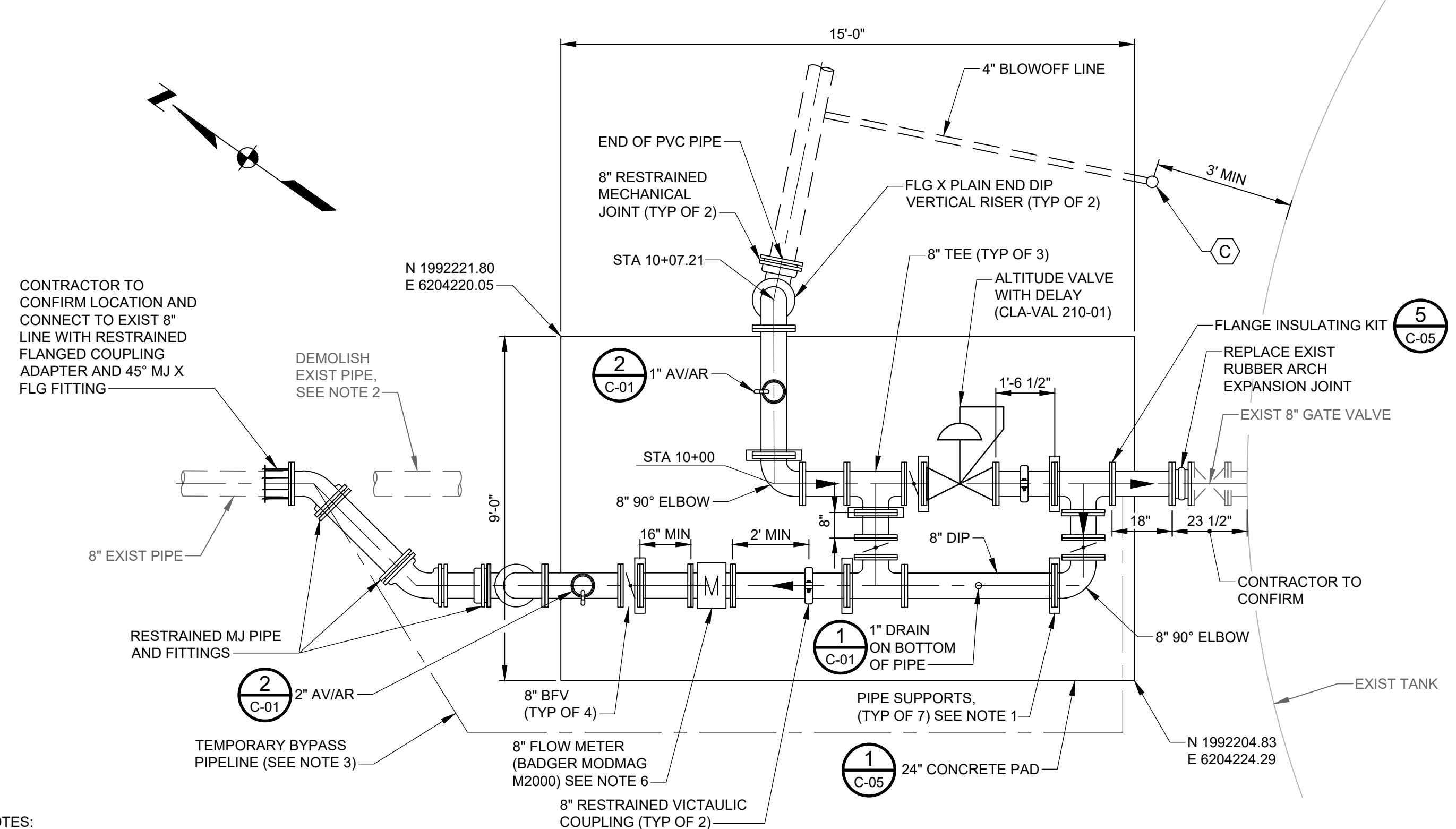
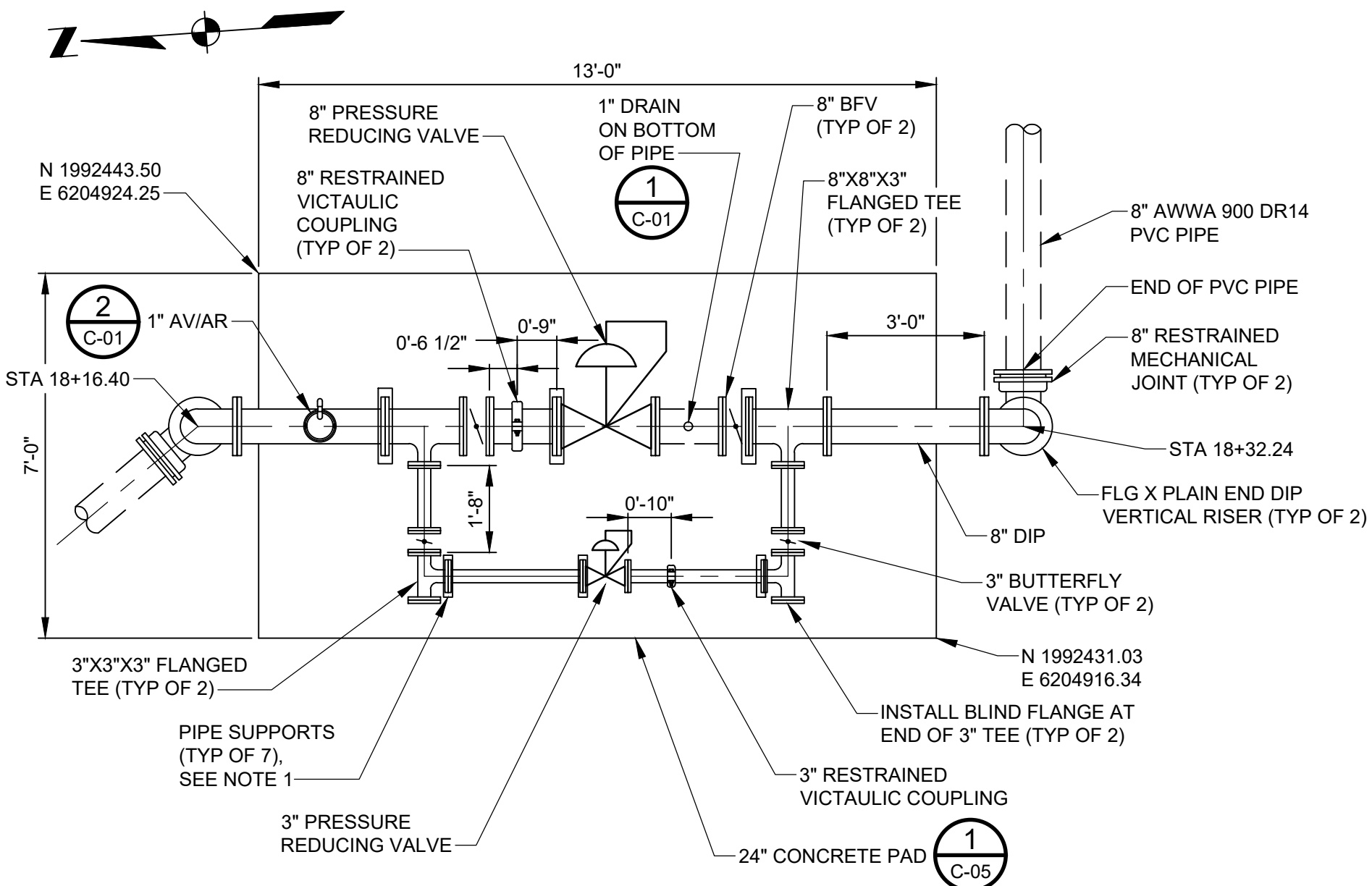
Plot Date: 1/31/2025 10:50 AM

User: CALVIN SUGG

p:\kpc-pw-bentley.com\kpc-pw\Documents\Clients\Senior Canyon Mutual Water Company\Projects\FEMA Funding Facilities Repair\_2344220.00\10-Design\10.06-Drawings\Civil\2344220.00-C-03



- SHEET KEYNOTES**
- A. INSTALL VALVE WITHIN VALVE BOX PER COUNTY OF VENTURA PUBLIC WORKS AGENCY WATER AND SANITATION CONSTRUCTION STANDARDS DETAIL W-2.
  - B. INSTALL THRUST BLOCK PER COUNTY OF VENTURA PUBLIC WORKS AGENCY WATER AND SANITATION CONSTRUCTION STANDARDS DETAIL W-19.
  - C. INSTALL 4" BLOWOFF PER COUNTY OF VENTURA PUBLIC WORKS AGENCY WATER AND SANITATION CONSTRUCTION STANDARDS DETAIL W-10.
  - D. CONTRACTOR TO EXPOSE THE 6-INCH PIPE TO THE INVERT AND CONDUCT A PIPE CONDITION ASSESSMENT OF THE PIPE, UP TO THE BRIDGE CROSSING, IN CONJUNCTION WITH SENIOR CANYON STAFF AND THE ENGINEER, BASED ON THE CONDITION OF THE EXISTING PIPE. CONTRACTOR TO REPLACE THIS PORTION OF THE BURIED PIPE AS NEEDED (FROM TIE-IN SOUTH TO PIPE DAYLIGHT AT THE BRIDGE CROSSING AND POTENTIALLY FROM THE TIE-IN NORTH FOR A DISTANCE TO BE DETERMINED). COST FOR REPLACEMENT, IF ANY, WILL BE NEGOTIATED WITH SENIOR CANYON PRIOR TO PERFORMING ANY WORK.



- NOTES:**
1. PIPE SUPPORTS SHALL BE HOT-DIP GALVANIZED HEAVY DUTY ADJUSTABLE FLANGE PIPE SUPPORTS FROM ADJUSTABLEPIPESUPPORTS.COM, OR AN APPROVED EQUIVALENT. USE A 12" SQUARE BASE PLATE WITH 13/16" ANCHOR HOLES. GROUT UNDERNEATH BASE PLATE AT 3/4" MIN TO 2" MAX THICKNESS.
  2. FINAL LOCATION OF PAD TO BE DETERMINED BY SENIOR CANYON STAFF IN THE FIELD. EXCAVATE MINIMUM 2' BENEATH PAD AND RECOMPACT WITH NATIVE SOIL, AS DEFINED IN SPECIFICATION SECTION 02300. IN 6" LIFTS TO 95% RELATIVE DENSITY. REGRADE THE AREA AS NEEDED WITH COMPACTED FILL TO 95% RELATIVE COMPACTON. MAX SLOPE SHALL BE 2:1.
  3. EQUIPMENT PAD FG 1311.15. COORDINATE WITH SENIOR CANYON AND THE ENGINEER PRIOR TO FINALIZING THE PAD FG.

- NOTES:**
1. PIPE SUPPORTS SHALL BE HOT-DIP GALVANIZED HEAVY DUTY ADJUSTABLE FLANGE PIPE SUPPORTS FROM ADJUSTABLEPIPESUPPORTS.COM, OR APPROVED EQUIVALENT. USE A 12" SQUARE BASE PLATE WITH 13/16" ANCHOR HOLES. GROUT UNDERNEATH BASE PLATE AT 3/4" MIN TO 2" MAX THICKNESS.
  2. REMOVE EXISTING PIPE UPSTREAM FROM NEW TIE IN POINT AND UP TO THE EXISTING VERTICAL 90 DEGREE BEND THAT CONNECTS TO THE EXISTING RUBBER ARCH EXPANSION JOIN. NO EXISTING PIPE SHOULD REMAIN UNDERNEATH THE NEW SLAB. THE EXISTING TRENCH SHOULD BE BACKFILLED WITH 2 SACK SLURRY.
  3. CONTRACTOR TO ROUTE AN 8" DIAMETER TEMPORARY BYPASS PIPELINE DURING CONSTRUCTION RELATED TO THE TANK CONNECTION. TEMPORARY PIPELINE TO BE DISINFECTED PER THE SPECIFICATIONS. CONNECTIONS ON EITHER END TO BE MADE BETWEEN 9AM AND 3PM.
  4. FINAL LOCATION OF PAD TO BE DETERMINED BY SENIOR CANYON STAFF IN THE FIELD. EXCAVATE MINIMUM 2' BENEATH PAD AND RECOMPACT WITH NATIVE SOIL, AS DEFINED IN SPECIFICATION SECTION 02300. IN 6" LIFTS TO 95% RELATIVE DENSITY. REGRADE THE AREA AS NEEDED WITH COMPACTED FILL TO 95% RELATIVE COMPACTON. MAX SLOPE SHALL BE 2:1.
  5. EQUIPMENT PAD FG 1251.15 TANK OUTLET CENTERLINE ANTICIPATED TO BE 1252.40. CONTRACTOR TO VERIFY ELEVATION AND COORDINATE WITH SENIOR CANYON AND THE ENGINEER PRIOR TO FINALIZING THE PAD FG.
  6. INSTALL TWO (2) 1" DIRECT BURY CONDUITS WITH CONDUCTORS FROM THE NEW FLOWMETER TO THE EXISTING SCADA BOX THAT IS LOCATED APPROXIMATELY 35' NORTHWEST OF THE EXISTING OUTLET PIPING OFF THE TANK. TERMINATE CONDUITS ABOVE GRADE AT THE SCADA BOX USING RAIN-TIGHT HUBS MANUFACTURED BY MYERS, O.Z. GEDNY, APPLETON OR APPROVED EQUAL. DURING CONSTRUCTION, PLUG CONDUIT ENDS WITH APPROVED MOISTURE-RESISTANCE SEALANT, DUXSEAL OR 3M SEAL SPRAY, TO PROTECT AGAINST DUST AND MOISTURE. CONNECTIONS TO SCADA TO BE MADE BY OTHERS.

**100% SUBMITTAL**

PRELIMINARY DESIGN PHASE  
NOT FOR CONSTRUCTION

THIS DOCUMENT IS AN INTERIM DOCUMENT AND NOT SUITABLE FOR CONSTRUCTION. AS AN INTERIM DOCUMENT, IT MAY CONTAIN DATA THAT IS POTENTIALLY INACCURATE OR INCOMPLETE AND IS NOT TO BE RELIED UPON WITHOUT THE EXPRESS WRITTEN CONSENT OF THE PREPARER.

NO	REVISION	DATE	BY



DESIGNED: JS  
DRAWN: HCS  
CHECKED: WCY

SENIOR CANYON MUTUAL WATER COMPANY  
OJAI, CA

FEMA FUNDING FACILITIES REPAIR  
SERVICE AREA PIPELINE F2 - NIGHTINGALE PIPELINE

Kennedy Jenks

SCALE: AS SHOWN

JOB NO: 2344220.00

DATE: JANUARY 2025

SHEET: 5 OF 5

C-03